

ANWENDUNG / APPLICATION

***Schiffbau
Ship Construction***

***Getriebe / Motorenteile
Gear / Motor Parts***



Product

***Ringe, Stäbe
Rings, shafts***

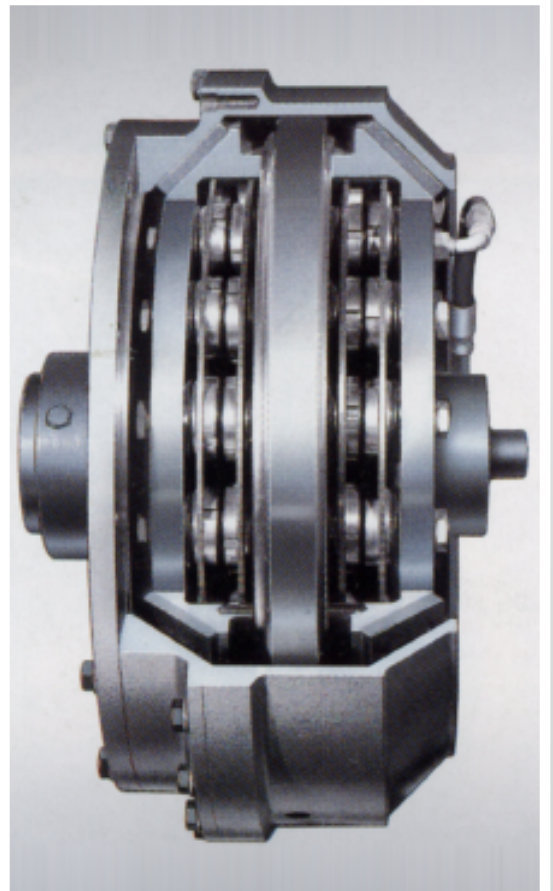
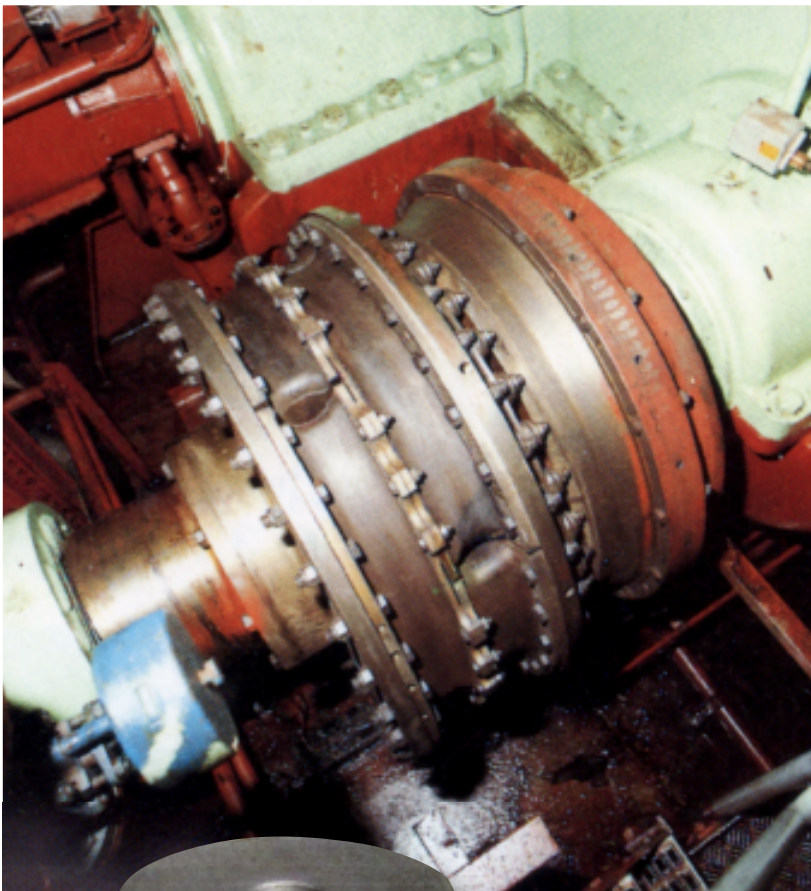
Material

Ck 45 / 42 CrMo 4

ANWENDUNG / APPLICATION

***Schiffbau
Ship Construction***

***Kupplungen
Couplings***



Product

***Ringe, Flansche
Rings, flanges***

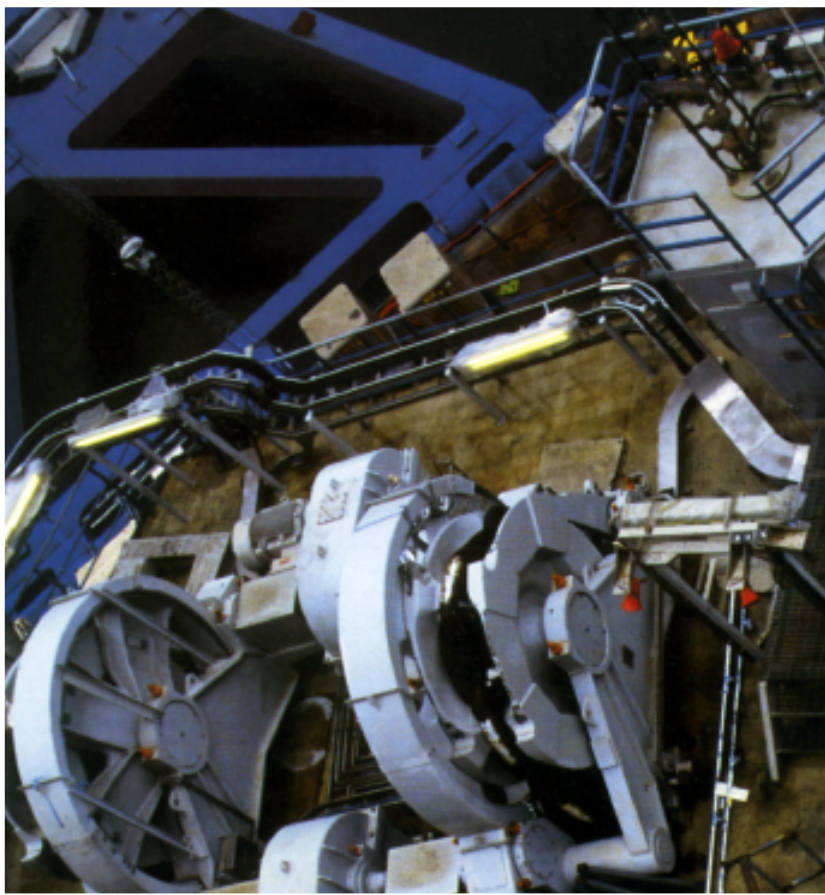
Material

***Ck 45
42 CrMo 4
30 CrNiMo 8***

ANWENDUNG / APPLICATION

*Marine Industrie
Marine Industry*

*Anker-Winden
Anchors-winches*



Product

*Ringe, Wellen, Stäbe
Rings, shafts, bars*

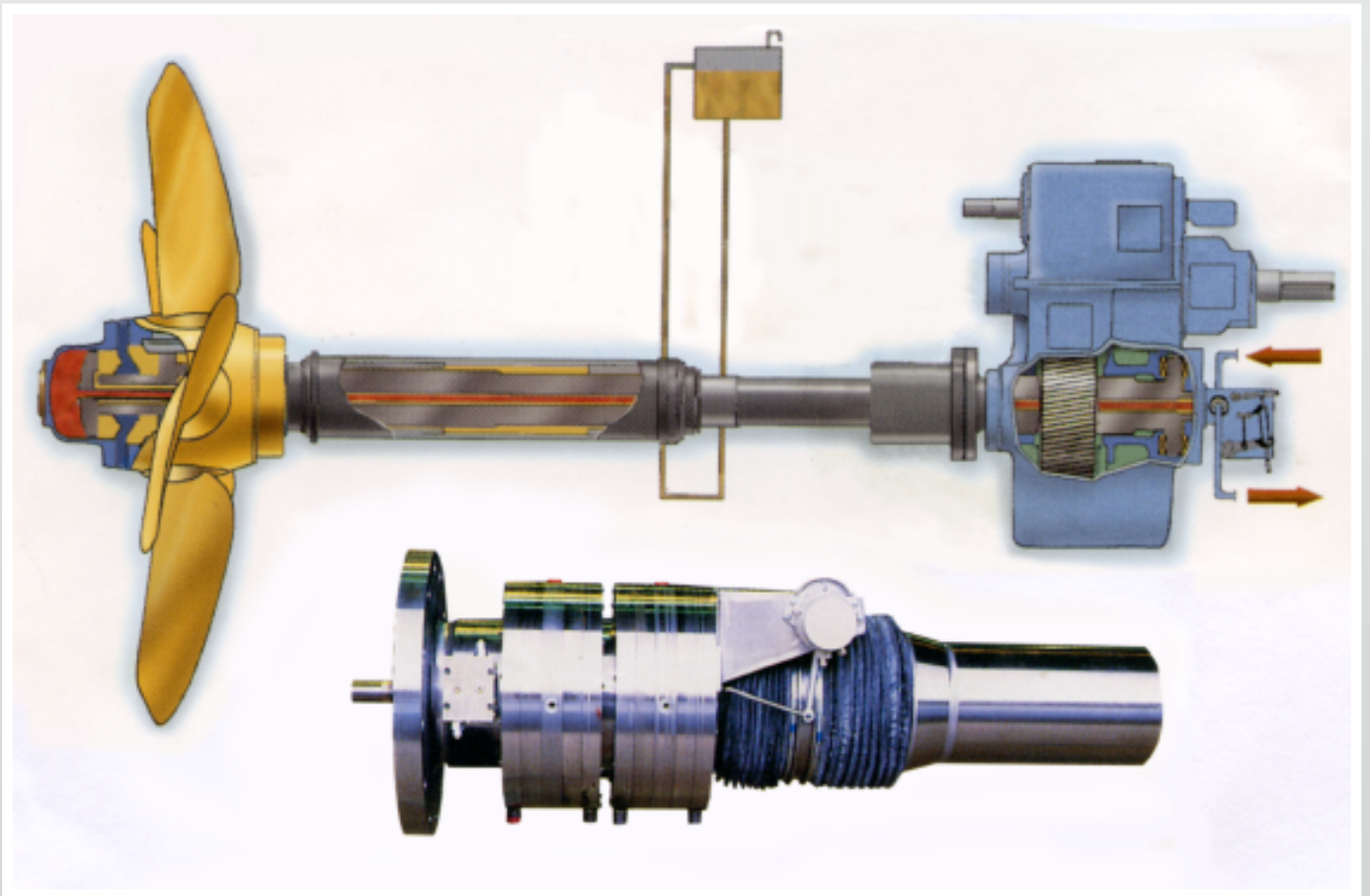
Material

*42 CrMo 4
25 CrMo 4*

ANWENDUNG / APPLICATION

*Marine Industrie
Marine Industry*

*Propeller Systeme
Propulsion systems*



Product

*Büchsen, Wellen
Sleeves, shafts*

Material

*42 CrMo 4
CK 45*